



about

e plus buildings was founded by Passive House Certified engineers dedicated to improving building construction and providing building owners better design, building performance and lasting savings. Our talent is in identifying energy savings and we strongly believe in sustainable development that will take care of people, the planet, and generate profits for building owners.

letswork
together



contact

info@eplusbuildings.com
www.eplusbuildings.com



energy efficient buildings

Passive House is the world's most rigorous building energy standard for new and existing buildings that can reduce energy for heating and cooling by up to 90%.



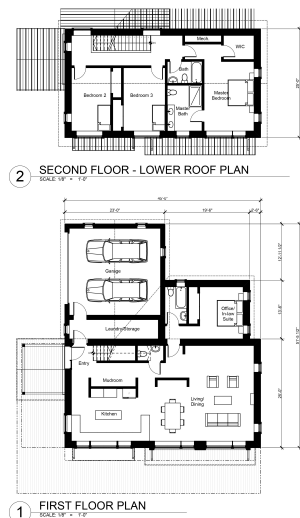
A Passive House is not just a home, it's a wise investment.

www.eplusbuildings.com

modern



Bedrooms: 3
Bathrooms: 2 1/2
Total Area: 2250 sq. ft.
Optional: In-law suite or office on north side on first level adding at least 250 sq. ft.



colonial



Bedrooms: 3
Bathrooms: 2 1/2
Optional: A fourth bedroom could be worked in above the breezeway. The first floor has a modern open plan despite the Colonial symmetry.



traditional



Bedrooms: 3
Bathrooms: 2 1/2
Total Area: 2250 sq. ft.
Optional: In-law suite or office on north side on first level adding at least 250 sq. ft.

